



The largest and highest-quality collection of local digital content available in New Zealand, on any device.





**TWO HUGE CATALOGUES** from *New Zealand Geographic* and *Natural History New Zealand* exclusively available on this platform.

**VIRTUAL REALITY** content in highest quality.

**SCIENCE NEWSCAST** streaming from RNZ.

**32 YEARS** in production.

**3500** high-quality, in-depth articles.

**300** hours of premium television programming.

**500** hours of science and environment radio.

**AVAILABLE ON ANY DEVICE**, anywhere, with silent authentication.

**AWARD-WINNING** content from New Zealand's leading writers, photographers and filmmakers.

**ALREADY POPULAR** with students and the public.

**VISUALLY RICH** for high engagement.

**LOCAL CONTENT** covering the entire New Zealand realm—from the Antarctic Dependency to Pacific territories, and beyond.

**CONSTANTLY UPDATED** with dozens of new stories and hundreds of pictures every two months.







## NZGEO ARCHIVE

The entire archive of 167 *New Zealand Geographic* magazines dating back to 1989 have been digitised and incorporated into a world-leading template for lush presentation of fullscreen images and longform text.

The archive is one of the richest sources of New Zealand content available—including more than 2500 timeless stories of original writing and photography commissioned by four award-winning editors over the magazine’s 30-year history. The content is added to with a new issue every two months.

The timelessness of the archive is evident from reader behaviour—of the 346,000 readers of *New Zealand Geographic*, 87% archive their issues indefinitely.

See [www.nzgeo.com/stories](http://www.nzgeo.com/stories)





300 HOURS  
OF VIDEO



---

## NZGEO TV

---

NZGeo TV includes more than 300 hours of premium television programming from legendary production house Natural History New Zealand (NHNZ), supplier of South Pacific, Australian, New Zealand and Asian content to both *National Geographic* and *Discovery* channels.

NZGeo TV is an on-demand digital television service, available at UHD resolution and streaming high-quality documentaries at fullscreen, on any device. The service adjusts to the user's bandwidth to provide an optimum viewing experience. There's no limit to the number of devices accessing the video or how many times you can play a video. Pause, scrub forward, rewind, play later—you have control.

From three-minute short films to 12-part series and one-hour documentaries in high-definition including old favourites such as *Wild South* and new series like *Our Big Blue Backyard*, this is the new home of natural history programming about the southern hemisphere.

See [www.nzgeo.com/video](http://www.nzgeo.com/video)







## NZGEO VR

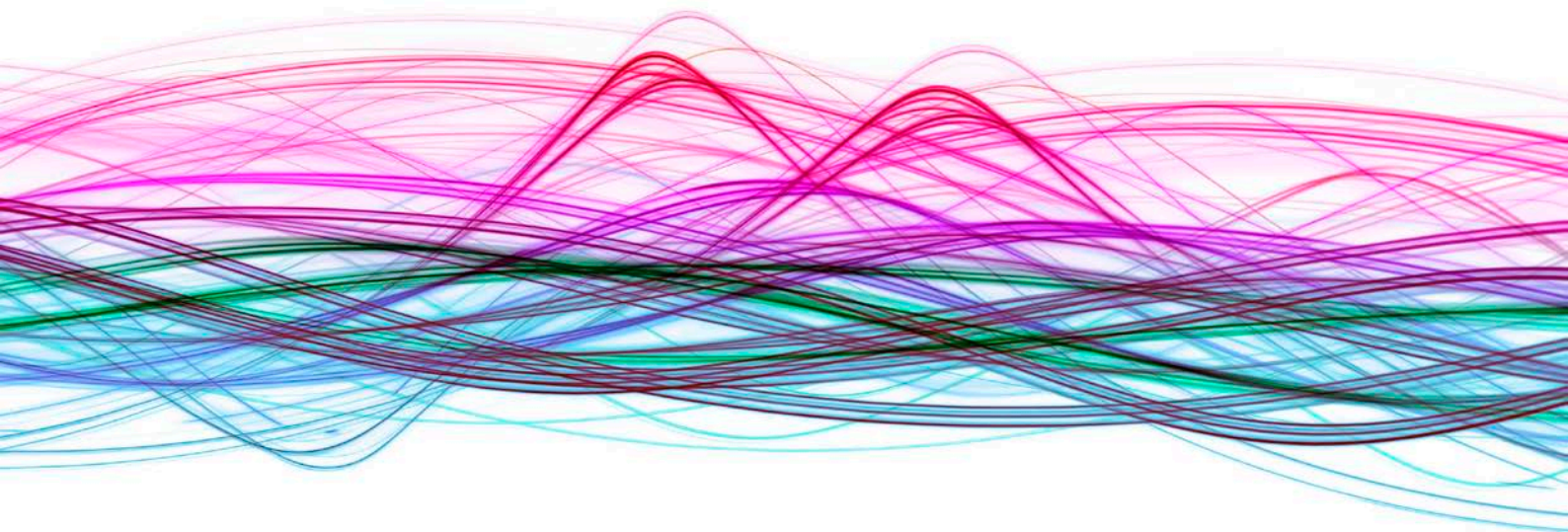
*New Zealand Geographic* has a world-leading VR production team and state of the art web technology to allow audiences to travel to places and have experiences beyond their wildest imagination. Visit parts of New Zealand too far flung or vulnerable to access, or simply too dangerous or costly. Take a whole class beneath the sea to swim with dolphins or across a glacier shattered with deep crevasses.

This is New Zealand's only substantive collection of local VR content. 100 VR experiences are available, with more being added all the time. It works on mobile devices, with or without headsets. We distribute special hardware allowing a facilitator to control an entire classroom of Oculus Go headsets at once—free with your subscription to NZGeoVR.

Preview content at [www.nzgeo.com/vr](http://www.nzgeo.com/vr)







---

## **NZGEO RADIO — FREE SERVICE**

---

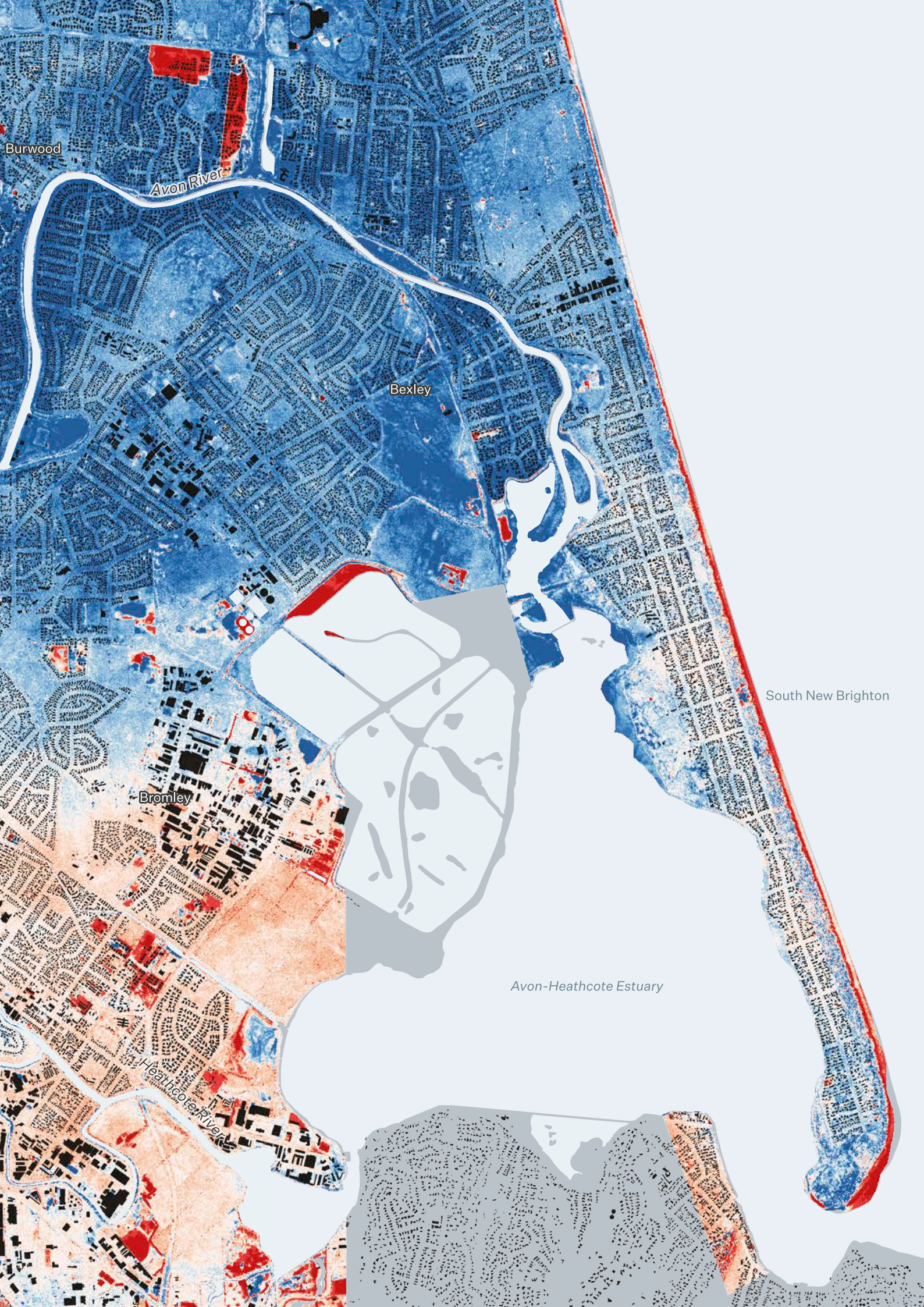
As part of a new partnership with RNZ, 500 hours of leading science and environment radio programming and news is streamed through [NZGeo.com/audio](http://NZGeo.com/audio). As it's public domain, all audio and news will be accessible free-of-charge to all users regardless of which subscription option an institution chooses.

The collection includes some of the best science programming of recent time, including the back-catalogue of Our Changing World, The Darwin and Rutherford lectures, Spectrum and Eye Witness, and more.

All audio and news items will turn up in searches with archive stories and videos, and appear in the 'related' sidebar alongside stories and videos, enriching the entire platform.

See [www.nzgeo.com/audio](http://www.nzgeo.com/audio)





Burwood

Avon River

Bexley

Bromley

Heathcote River

Avon-Heathcote Estuary

South New Brighton



---

## AVAILABLE EVERYWHERE, ON ANYTHING

---

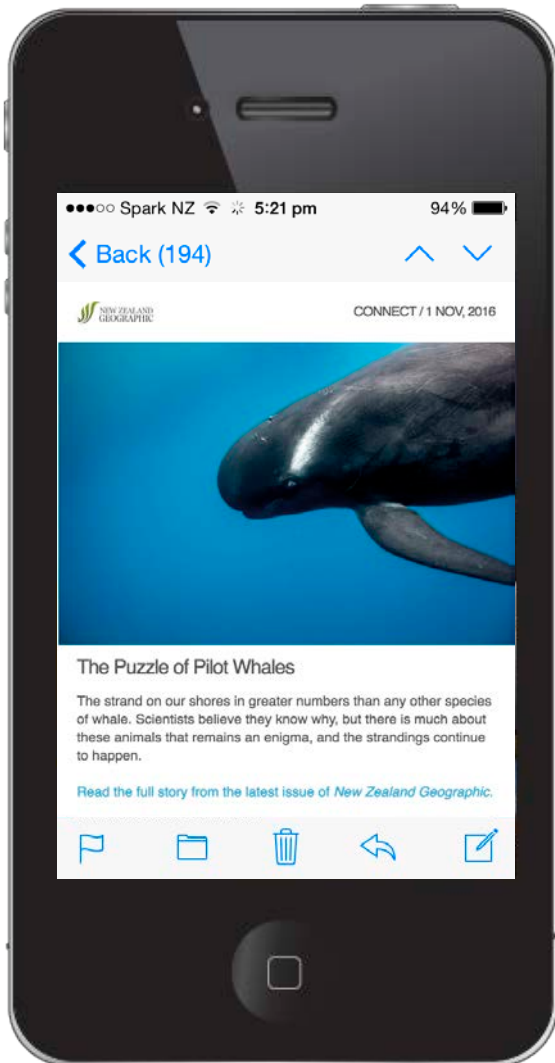
Users can search across archive stories, videos and audio items at once, explore by topic thread, author, trending and related items.

The page adapts to any device and supports swiping and tapping gestures common on touch devices, even 'magic-window' and headset modes for viewing VR content with and without headsets respectively. The archive is html5-based and can be read on any internet-connected device with a browser, including smartphones and tablets. There isn't any software to download or plugins to maintain.

Subscribing institutions are authenticated automatically and silently by IP address, referring URL or EZProxy—there are no passwords or logins to remember... it just works.







---

## CONNECT: FREE EMAIL NEWS SERVICE

---

The Connect news service creates connections between current events and in-depth stories, video and audio items every week. It's a free service that promotes inquiry learning, utility of the archive and fosters the ability to read and gather content beyond the headlines. Teachers and students can subscribe to the free email service by visiting [www.nzgeo.com/connect](http://www.nzgeo.com/connect)

Administrators can copy the material out of their inboxes and post across internal and social channels to reach their audience.







---

## SPECIAL FOCUS AREAS

---

Special Focus Areas are a curated stack of content—stories, video and audio—connected to a subject area. As a subject begins to trend in news media or public conversation, NZGeo editors gather together relevant content and supplement it with new material to rapidly create a huge collection of material that provides vastly more context than what’s available in daily media.

For instance, the Predator-Free New Zealand Special Focus area delivered 16 full feature stories, profiles on two champions, half a dozen departments and videos on conservation in New Zealand, the science of 1080 and species at risk, and made it available on the same day the PFNZ announcement was made. See [www.nzgeo.com/predator-free](http://www.nzgeo.com/predator-free)

Other active stacks include [/kermadecs](#), [/earthquake](#), [/sharks](#), [/water](#), [/climate](#), [/penguins](#), [/curtain-call](#), [/fixable](#)



---

## PRICING

---

NZGeoArchive, NZGeoTV and NZGeoVR are three separate services available by subscription through the EPIC consortium. Access is charged per provisioned user (or full-time-equivalent in the case of schools). There are no set up, management or loading fees payable.

The products may be bundled in any combination for a discount. Receive a 20% discount for two services, or a 25% discount for all three services.

### SCHOOLS, TERTIARY & SPECIAL LIBRARIES

PROVISIONED USERS	RATE [One service]	RATE [Two services] 20% discount	RATE [Three services] 25% discount
Up to 500	0.28 [\$140]	0.44 [\$220]	0.61 [\$305]
501-2000	0.25 [\$125-\$500]	0.4 [\$200-\$800]	0.56 [\$280-\$1120]
2001-10,000	0.23 [\$460-\$2300]	0.36 [\$720-\$3600]	0.50 [\$1000-\$5000]
10,001-	0.21 [\$2100-]	0.33 [\$3300-]	0.47 [\$4700-]

### PUBLIC LIBRARIES

PROVISIONED USERS	RATE [One service]	RATE [Two services] 20% discount	RATE [Three services] 25% discount
Up to 10,000	0.030 [\$300]	0.048 [\$480]	0.068 [\$680]
10,001-20,000	0.028 [\$280-\$560]	0.045 [\$450-\$900]	0.063 [\$630-\$1260]
20,001-40,000	0.027 [\$540-\$1080]	0.043 [\$860-\$1720]	0.060 [\$1200-\$2400]
40,001-80,000	0.025 [\$1000-\$2000]	0.040 [\$1600-\$3200]	0.056 [\$2240-\$4480]
80,001-150,000	0.022 [\$1760-\$3300]	0.036 [\$2880-\$5400]	0.049 [\$3920-\$7350]
150,001-300,000	0.021 [\$3150-\$6300]	0.034 [\$5100-10,200]	0.047 [\$7050-\$14,100]
300,001-	0.02 [\$6000-]	0.021 [\$9600-]	0.045 [\$13,500-]

#### For example;

A university with 12,000 EFTS & academic staff;  $12,000 \times 0.21 = \$1184$  for one product, or  $12,000 \times 0.33 = \$3960$  for both the NZGeo Archive and NZGeo TV products. A public library serving a population of 50,000;  $50,000 \times 0.025 = \$1250$  for one product, or  $50,000 \times 0.040 = \$2000$  for both the NZGeo Archive and NZGeo TV.



---

## **CONTACT**

---

Paula Banks — EPIC Manager  
epic@epic.org.nz  
04 474 3058

James Frankham — New Zealand Geographic  
publisher@nzgeographic.co.nz  
021 775423

